

Discovery: Upper Green-Great Divide Watershed, WY

Project Summary

The Upper Green-Great Divide Watershed, WY project includes Base Level Engineering (BLE) data that is being produced for the project area shown in Figure 1. Hydrology for the BLE is being completed using probabilistic methods and stochastic storm transposition (SST). SST creates realistic storm scenarios using historical weather records to better understand how storms of different types and intensities could impact the watershed. Hydraulic models will produce 2D BLE using inflow hydrographs from subbasin outlets. Modeled streams and further mesh refinement in areas are shown in Figure 1. Flood risk products including water surface elevation grids, depth grids and velocity grids will be created. Discovery efforts include virtual and possible in-person community engagement to enhance flood risk understanding.

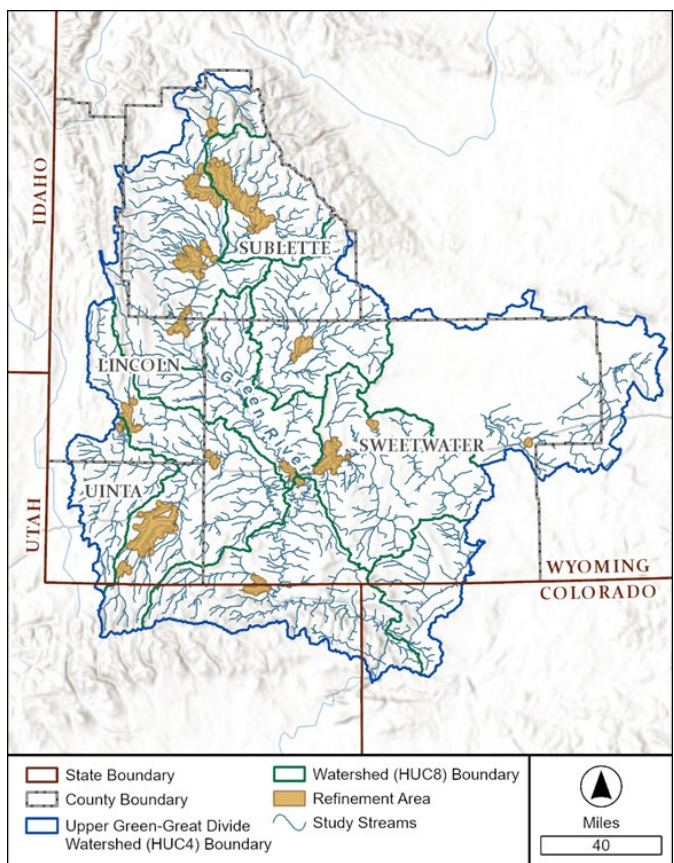


Figure 1: Project Study Area



FEMA

Discovery Overview

Goal: Identify Risk

Discovery is the first phase of the Risk MAP process (Figure 2) when the Risk MAP project team sets out to learn as much as it can about your community’s flood risk challenges and goals. The more local knowledge, insights, data and information you can share, the better the project team can help your community become safer, stronger and more resilient.



Figure 2: Risk MAP Process

What is BLE?

Focusing on areas that are either unmapped or lacking digital maps, BLE generates flood hazard information based on hydrologic and hydraulic engineering methods that comply with FEMA’s standards for flood risk projects. In some instances, BLE data can be accessed and used prior to receiving or updating regulatory FIRMs. Information provided through BLE may be considered Best Available Information (BAI).

BLE PRODUCTS:

Flood extents, Water Surface Elevation, Depth, Velocity, and Probability Grids

Project Timeline

Table 1: Project Timeline

| Project Task | Date |
|-------------------------------------|-------------------|
| Hydrology Model Development | Early Winter 2023 |
| Hydraulic Model Development | Winter 2024 |
| SST Production | Winter 2024 |
| Hydrology Data Development Complete | Spring 2025 |
| Hydrology Incorporation | Spring 2025 |
| Hydraulic Data Development Complete | Fall 2025 |

| Project Task | Date |
|------------------------------|--------------|
| Flood Risk Products Complete | Winter 2025 |
| BLE Data Posted to Viewer | Winter 2025 |
| Discovery Meeting | January 2026 |

Next Steps

Feedback from communities has been received, please attend the Discovery Closeout Meeting, May 20, where communities will receive confirmation about data/projects moving forward.